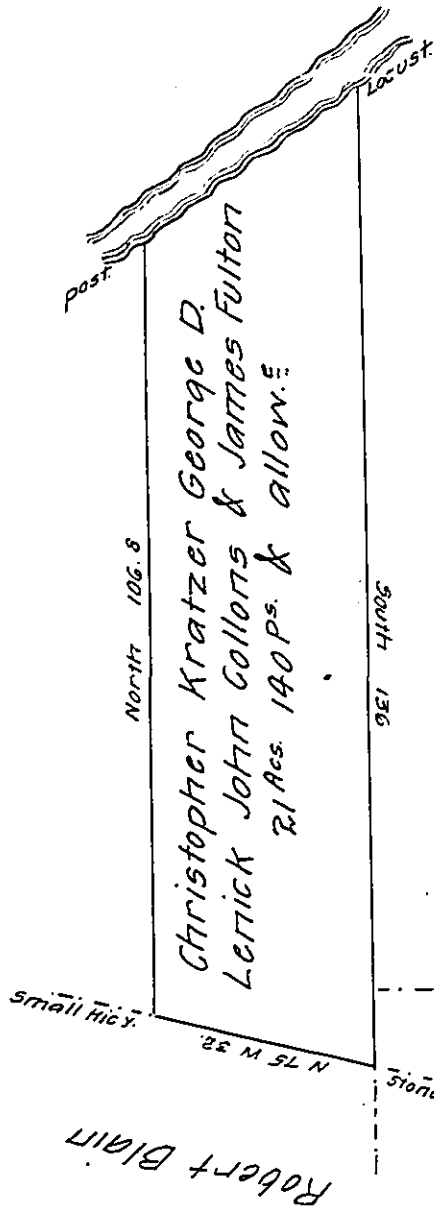


Page 278

C. Kratzer & Co.



WILLIAM SANSOTT

Courses & distances from  
the Locust up the river to  
the post  

$$\begin{array}{r} 5\ 57\ N\ 32.5 \\ 5\ 48\ W\ 5\ \text{to the post} \\ \hline 37.5 \end{array}$$

Corrected per tables.  
Courses & distances down the  
river from the post to the  
Locust viz.  

$$\begin{array}{r} N\ 48\ E\ 5 \\ N\ 57\ E\ 32.5 \\ \hline 37.5 \end{array}$$

Draft of a tract of land situated in Bradford township Clearfield County on the south side of the west Branch of the Susquehanna river containing twenty one acres one hundred and forty perches and the usual allowance of six per cent for roads &c. Surveyed to Christopher Kratzer George D. Lerrick John Collins and James Fulton the 2<sup>nd</sup> day of July 1830 in pursuance of their warrant dated the 26<sup>th</sup> day of June 1830 granted for 20 acres.

David Ferguson D.S.

To Jacob Spangler Esqr.  
Surveyor General.

IN TESTIMONY that the above is a copy of the original remaining on file in the Department of Internal Affairs of Pennsylvania, made conformably to an Act of Assembly approved the 16th day of February, 1833, I have hereunto set my Hand and caused the Seal of said Department to be affixed at Harrisburg, this third day of June 1908.

*Henry A. Houch*  
Secretary of Internal Affairs.